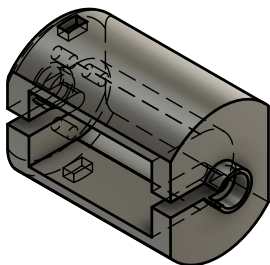
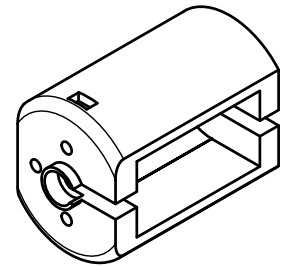
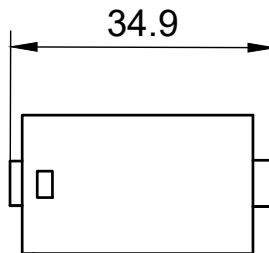
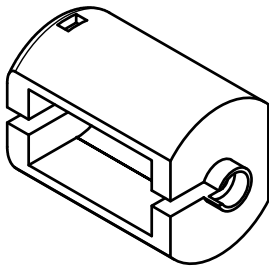
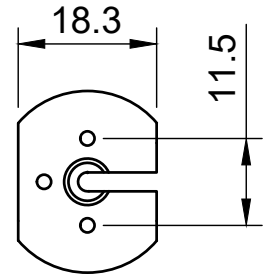
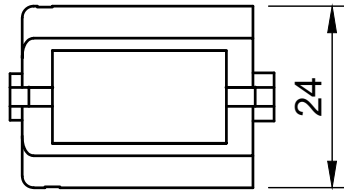
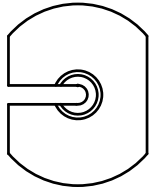
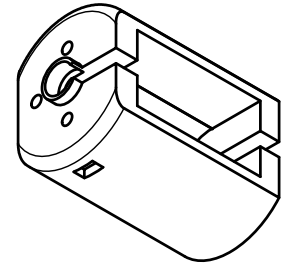
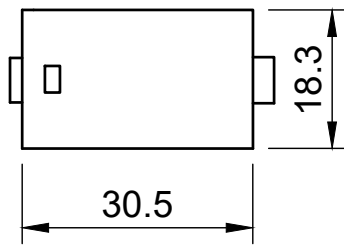
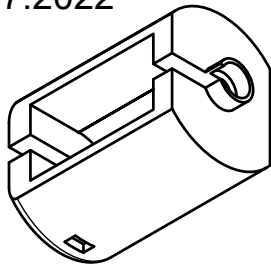


7.7.2022



Motorhalter - PBM025 - 3386

Abmessungen (LxBxH): 30,5 x 18,3 x 24 mm

Motordurchmesser: 12 mm

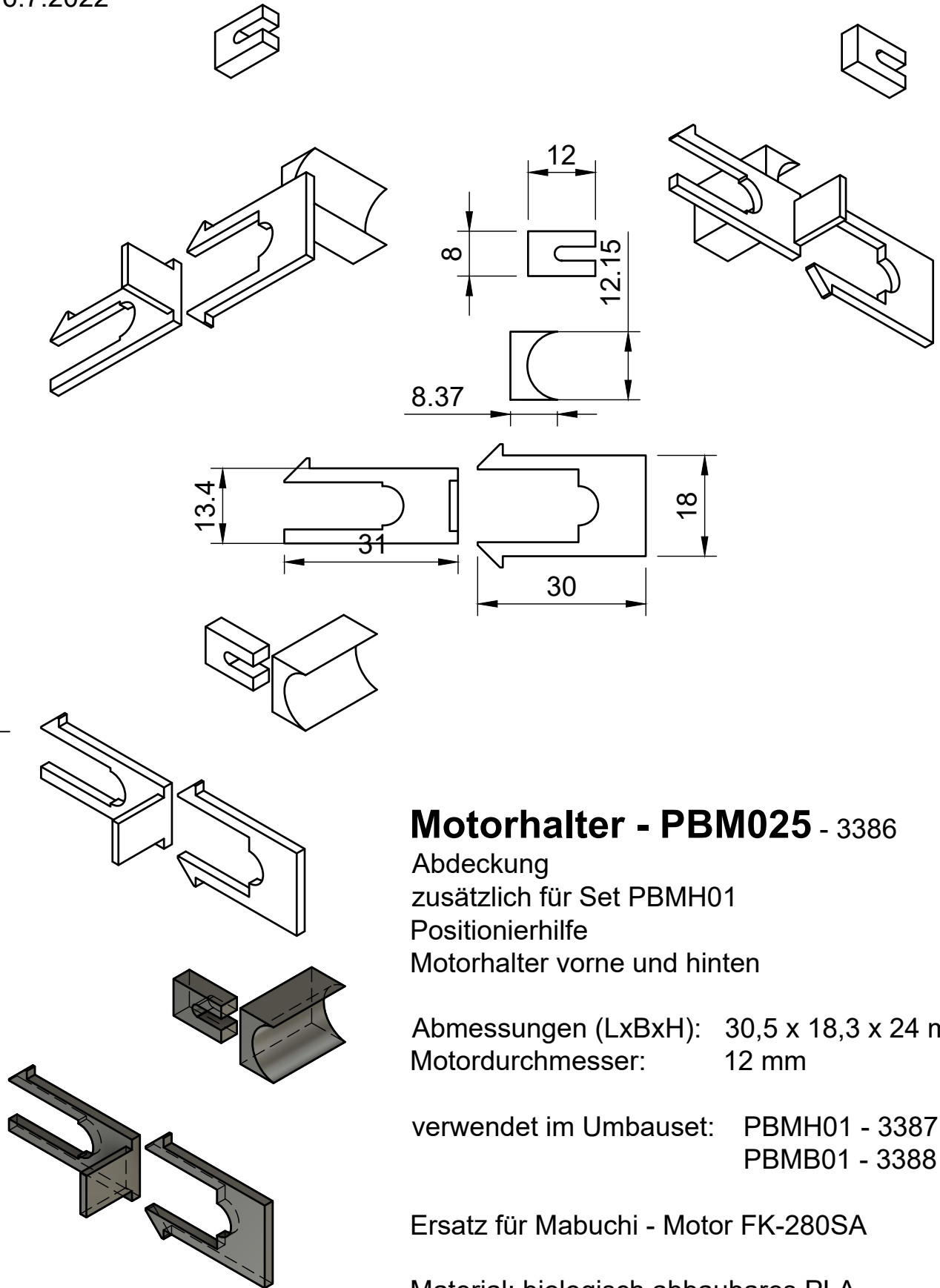
verwendet im Umbaueset: PBMH01 - 3387
PBMT01 - 3388

Ersatz für Mabuchi - Motor FK-280SA

Material: biologisch abbaubares PLA

Alle Rechte bei LOKwerkstatt-Wien - Peter Behavy
Technische Änderungen vorbehalten.

6.7.2022



Motorhalter - PBM025 - 3386

Abdeckung

zusätzlich für Set PBMH01

Positionierhilfe

Motorhalter vorne und hinten

Abmessungen (LxBxH): 30,5 x 18,3 x 24 mm

Motordurchmesser: 12 mm

verwendet im Umbauset: PBMH01 - 3387

PBMB01 - 3388

Ersatz für Mabuchi - Motor FK-280SA

Material: biologisch abbaubares PLA

Alle Rechte bei LOKwerkstatt-Wien - Peter Behavy
Technische Änderungen vorbehalten.