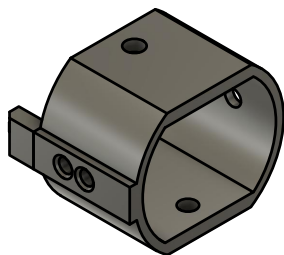
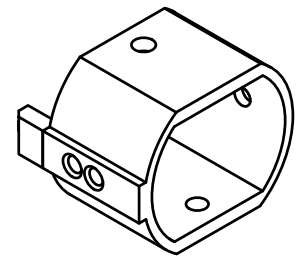
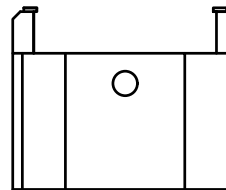
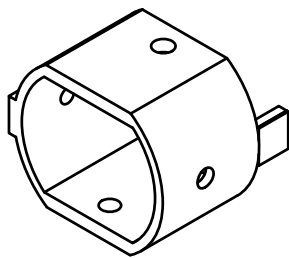
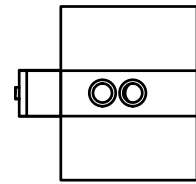
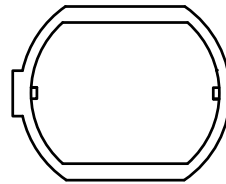
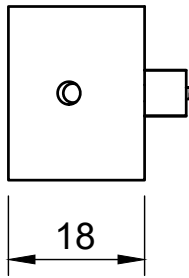
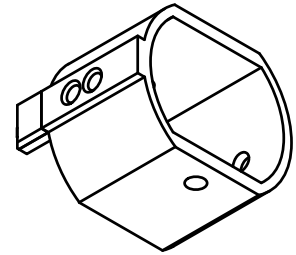
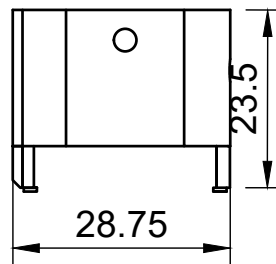
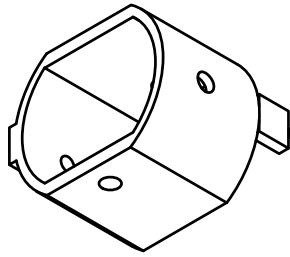


28.7.2022



## Motorhalter - PBM031 - 3449

Abmessungen (LxBxH): 23,5 x 18 x 28,75 mm

Motordurchmesser: Mabuchi PC-260

Verwendet für Kleinbahnmodellen wo der Mabuchi Motor verbaut ist.

Ersetzt die Gussmotorhalterung von Kleinbahn.

Material: biologisch abbaubares PLA

Alle Rechte bei LOKwerkstatt-Wien - Peter Behavy  
Technische Änderungen vorbehalten.